

*Echenique Ranch, Ranch 4
Organic*

AMERICAN FARMS

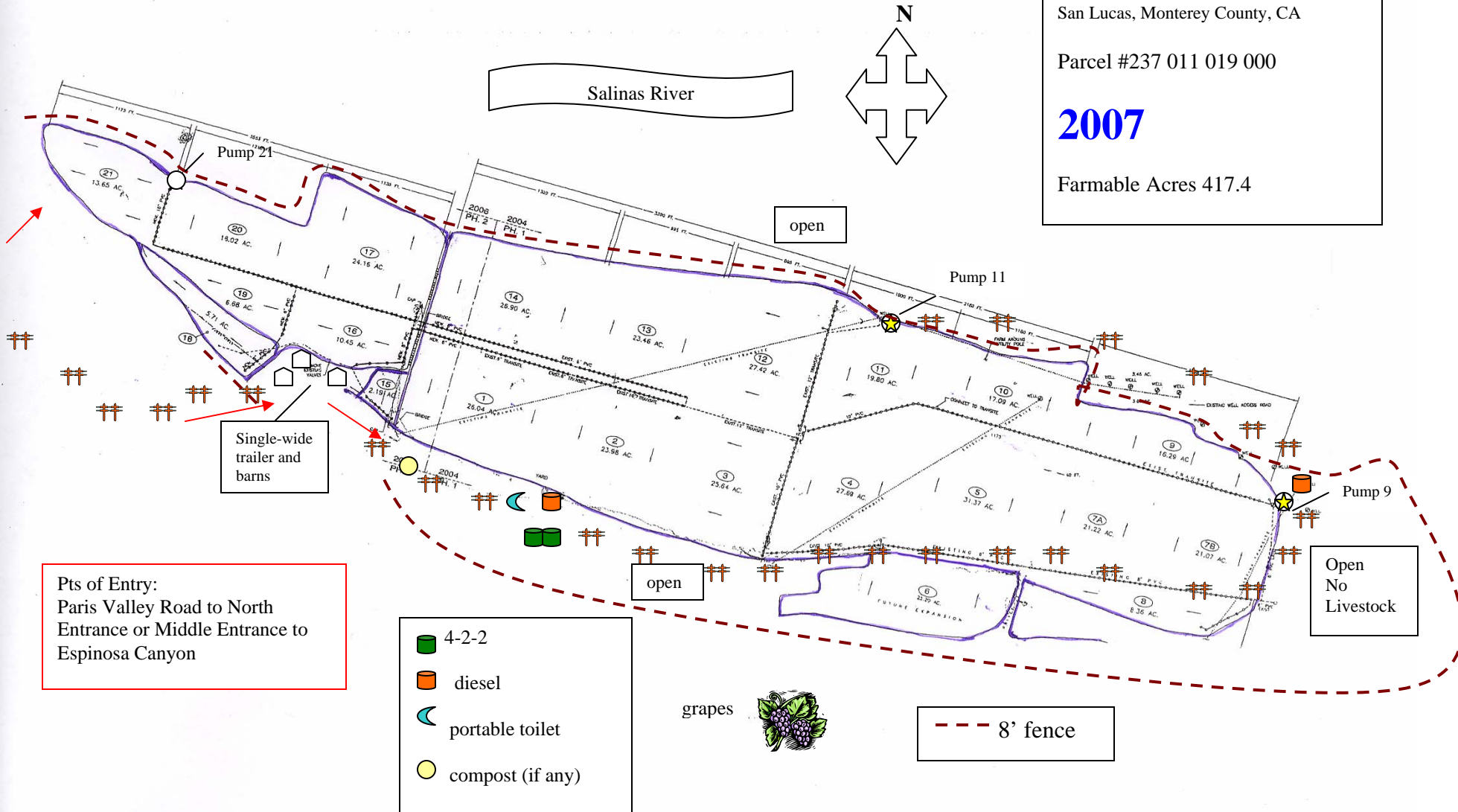
Permit #27-07-27S190X

San Lucas, Monterey County, CA





Parcel #237 011 019 000

2007

Farmable Acres 417.4



Pts of Entry:
Paris Valley Road to North
Entrance or Middle Entrance to
Espinosa Canyon

-  4-2-2
-  diesel
-  portable toilet
-  compost (if any)

--- 8' fence

