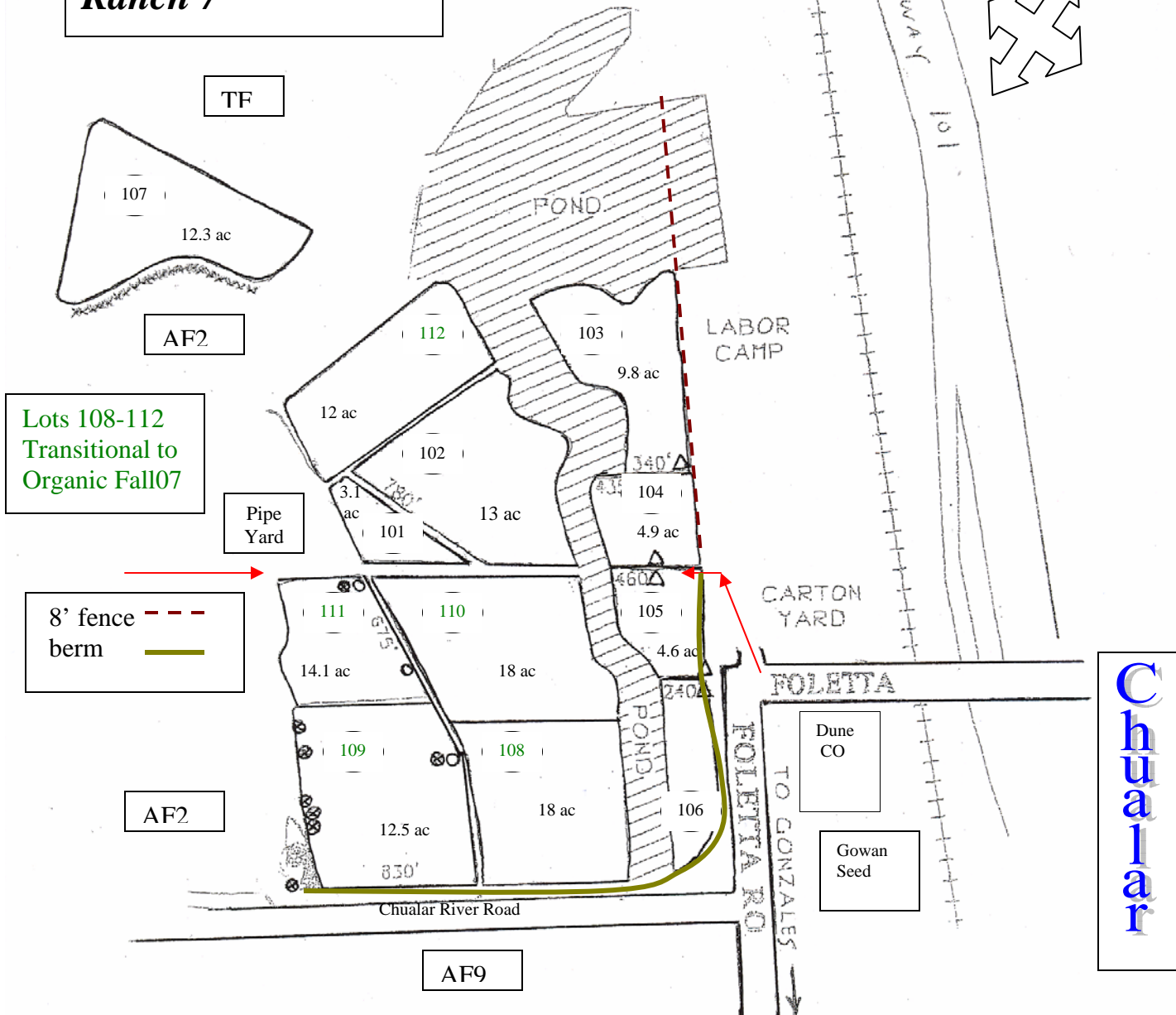


**Pedersen Organic,
Ranch 7**



Chualar

AMERICAN FARMS

Permit #27-07-27S190X

Salinas, Monterey County, CA
Township 16S, Range 4E, Section 4
Parcel # 145011037000

2007

Net Farmable Area = 126.9

Neighboring Ranches:

- AF2- American Farms Rch2
- AF9 – American Farms Rch 9
- TF – Triangle Farms, Juanita Rch

Pt of Entry = Foletta Road
 Or through American Farms Rch 2